

OFFICIAL

JUDES PLACE SECOND ADDITION

KNOW ALL MEN BY THESE PRESENTS: That Wayne L. Walters and Judith L. Walters, husband and wife, fee owners, of the following described property situated in the County of Scott, State of Minnesota to-wit:

Have caused the same to be surveyed and plotted as JUDES PLACE SECOND ADDITION, and do hereby donate and dedicate to the public for public use forever the easements for drainage and utility purposes only as shown on the plat.

In Witness Whereof said Wayne L. Walters and Judith L. Walters, husband and wife have caused these presents to be signed this 21st day of August, 2009.

SIGNED: *Wayne L. Walters* and *Judith L. Walters*
Wayne L. Walters Judith L. Walters

STATE OF MINNESOTA COUNTY OF SCOTT The foregoing instrument was acknowledged before me this 21st day of August 2009 by Wayne L. Walters and Judith L. Walters, husband and wife as fee owners.

Connie M. Kallini
Notary Public, Scott County, Minnesota
My Commission expires January 31, 2010

I hereby certify that I have surveyed and plotted the property described on this plat as JUDES PLACE SECOND ADDITION; that this plat is a correct representation of the survey; that all distances are correctly shown on the plat in feet and hundredths of a foot; that all monuments have been correctly placed in the ground as shown or will be correctly placed in the ground as designated; that the outside boundary lines are correctly designated on the plat; and that there are no wet lands as defined in MS 505.01 Subd. 3, or public highways to be designated other than shown.

Scott M. Swanson
Scott M. Swanson, Land Surveyor
Minnesota License Number 42309

STATE OF MINNESOTA COUNTY OF SCOTT The foregoing Surveyors certificate was acknowledged before me this 12th day of August 2009, by Scott M. Swanson, Land Surveyor, Minnesota License Number 42309.

EAN NEUTSCH
Notary Public, Scott County, Minnesota
My Commission expires January 31, 2010

This plat of JUDES PLACE SECOND ADDITION, was approved and accepted by the Town Board of Cedar Lake Township at a regular meeting thereof held this 21st day of August 2009, and is in compliance with the provisions of Minnesota Statutes Section 505.03, Subdivision 2.

By *Barbara Williams* its Chairman Attest *Anna Kowalcyk* its Clerk

I hereby certify that I have examined this plat of JUDES PLACE SECOND ADDITION, and do hereby recommend this plat for approval as to form this 25th day of August 2009.

Scott County Attorney
Scott County Attorney

I hereby certify that the Board of Commissioners of Scott County, duly approved this plat of JUDES PLACE SECOND ADDITION, at a regular meeting thereof, this 25th day of August 2009.

Scott County Administrator
Scott County Administrator

SCOTT COUNTY AUDITOR / TREASURER: I hereby certify that the present and delinquent taxes on the lands described within are paid and the transfer is entered this 4th day of September 2009.

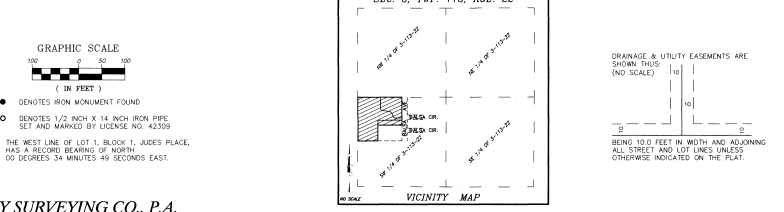
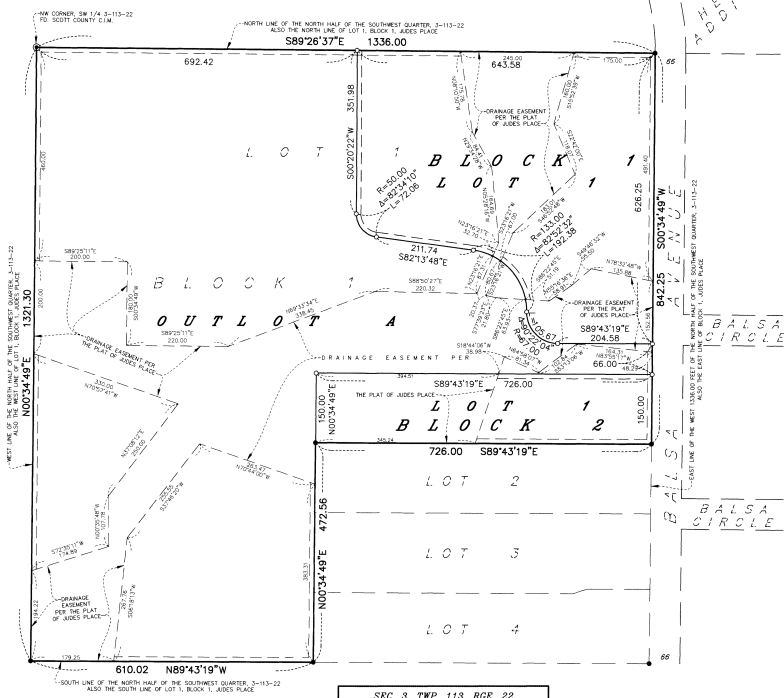
Scott County Auditor
Scott County Auditor

SCOTT COUNTY SURVEYOR: Pursuant to Minnesota Statutes, Chapter 389.09, Subd. 1, as amended, this plat has been reviewed and approved this 24th day of August 2009.

Scott County Surveyor
Scott County Surveyor

SCOTT COUNTY RECORDER: I hereby certify that this plat of JUDES PLACE SECOND ADDITION, was filed in this office this 4th day of September 2009 at 10:00 o'clock A.M., and was filed as Document No. 85519.

Scott County Recorder
Scott County Recorder



3383

VALLEY SURVEYING CO., P.A.